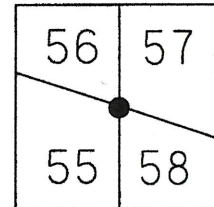


O.D.O.T. DISTRICT 2 SURVEY OFFICE (USE ONLY)

PERSONNEL _____ REFERENCE NO. 41 SHEET 23 OF 23
 NOTES WESTFALL DATE 8-26-14 ROUTE US 20
 H.C. _____ WEATHER FAIR COUNTY WOOD
 R.C. _____ TEMP. 50° TOWNSHIP TROY
 _____ SECTION 56
 _____ T 6 N R 12 E

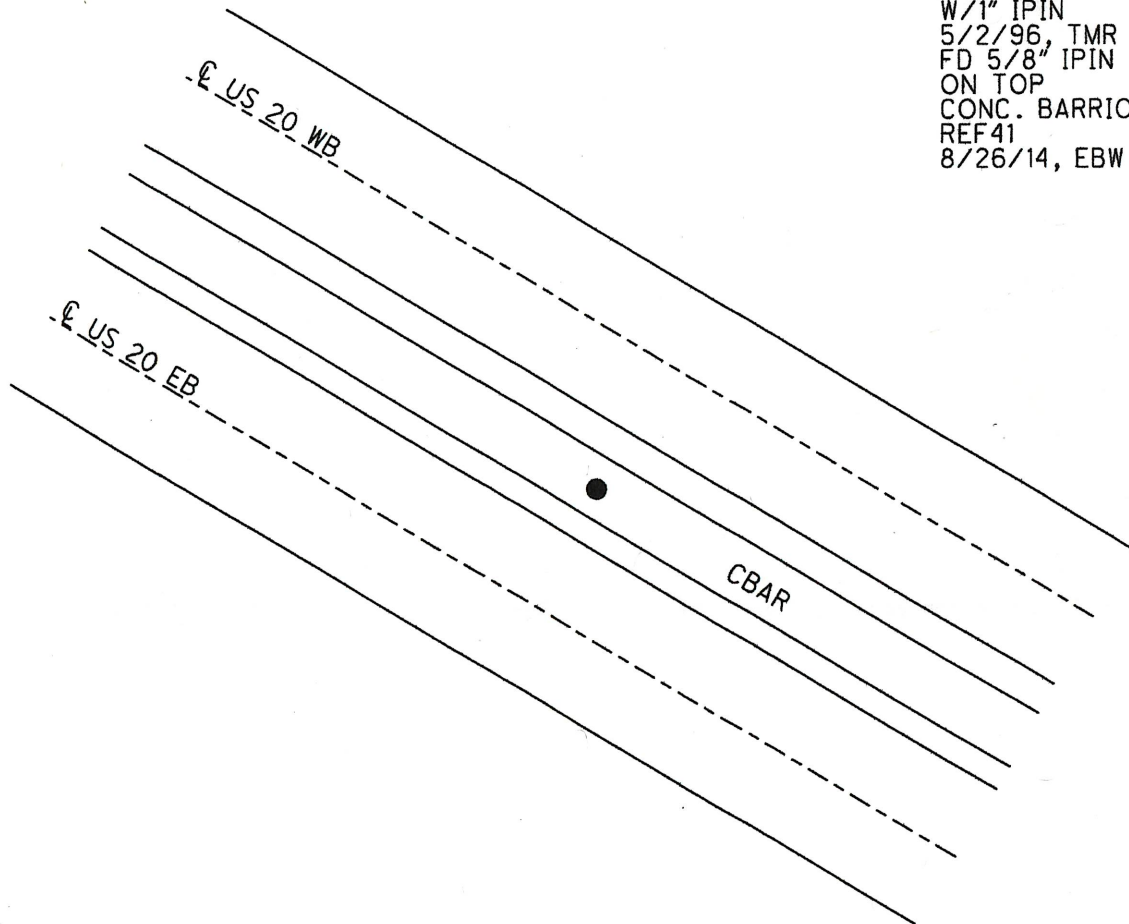
TYPE MONUMENT 5/8" IPIN
 ON SURFACE - ~~BELOW~~ ON
~~LEFT~~ - Q PAV'T - RIGHT 3.7'
2.3' TO LT EDGE PAVEMENT
 S.L.M. 587+71.99

GRID: NORTHING: 666364.212 EASTING: 1704505.516



NOT WITHIN PROJECT LIMITS

RECORD:
 FD MONBOX
 W/1" IPIN
 5/2/96, TMR
 FD 5/8" IPIN
 ON TOP
 CONC. BARRIOR
 REF41
 8/26/14, EBW



O.D.O.T. DISTRICT 2 SURVEY OFFICE (USE ONLY)

PERSONNEL

REFERENCE NO. 41 A

SHEET 1 OF 12

NOTES LOEHRKE

DATE 5/2/76

ROUTE US 20

H.C. ROUSOS

WEATHER FAIR

COUNTY WOOD

R.C. CANTERBURY

TEMP. 50°

TOWNSHIP TROYDWG BY NIESE

PID

T_6_N R_12_E

TYPE MONUMENT SM.R.R.SPIKE

ON SURFACE - ~~BELOW~~ ON

OFFSET C PAVEMENT 14.2' LT : ~~RT~~

1.5' LT OF LT EDGE PAVEMENT

STATION: 605+69

HORZ.DATUM:

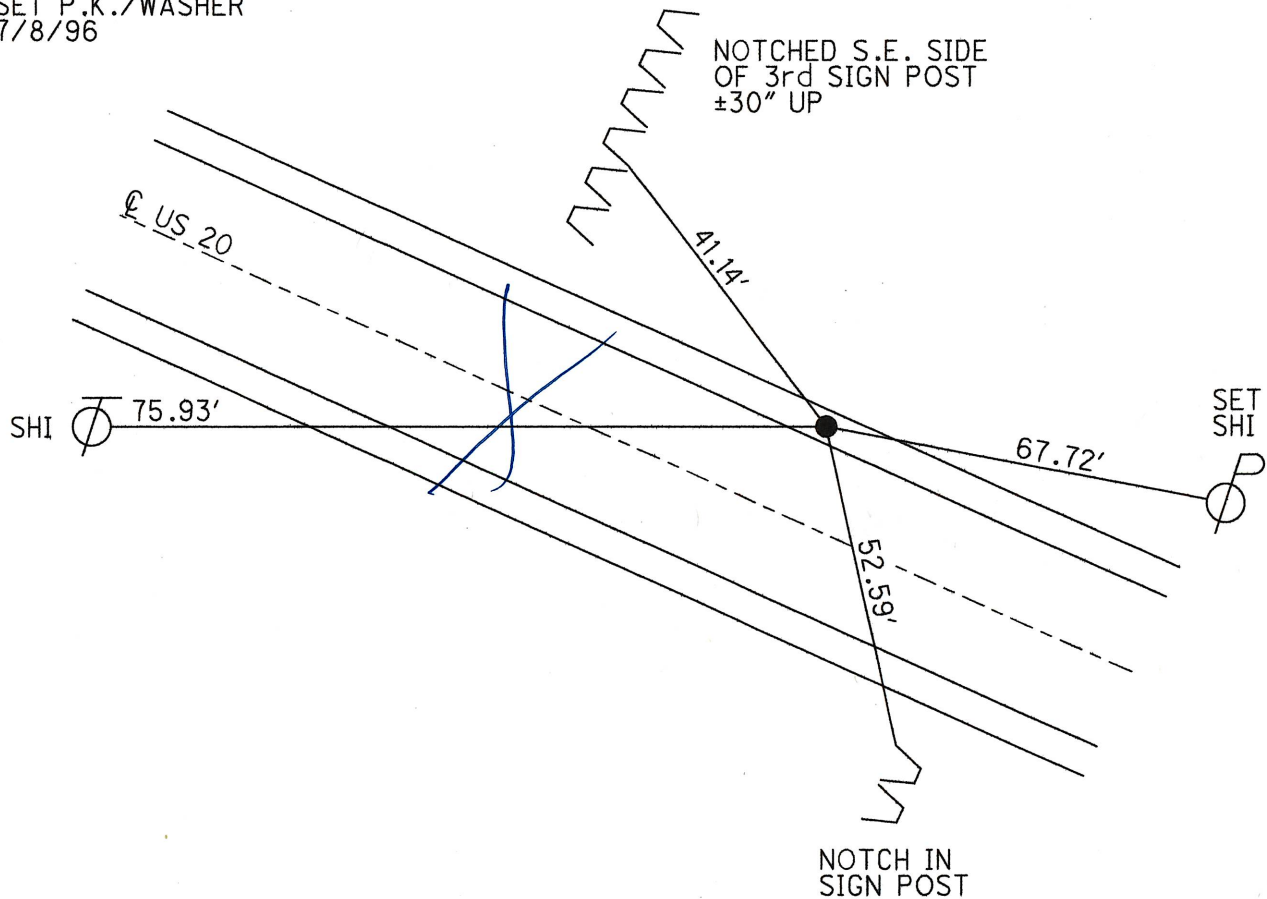
GEOID:

GRID: NORTHING:

EASTING:

NOT WITHIN PROJECT LIMITS

RECORD:
FD SM.R.R.SPIKE
5/2/96, CL
SET P.K./WASHER
7/8/96



$$SLM = 11.71 \times 5280 = 618+28.80$$

O.D.O.T. DISTRICT 2 SURVEY OFFICE (USE ONLY)

PERSONNEL

REFERENCE NO. 43

SHEET 2 OF 12

NOTES LOEHRKE

DATE 5/2/96

ROUTE US 20

H.C. ROUSOS

WEATHER NICE

COUNTY WOOD

R.C. CANTERBURY

TEMP. 50°

TOWNSHIP TROY

SECTION RT 60

DWG BY NIESE PID

T 6 N R 12 E

TYPE MONUMENT SM.R.R.SPIKE

ON SURFACE - ~~BELOW~~ ON

OFFSET Q PAVEMENT 12.6' LT : RT

2.0' LT OF LT EDGE PAVEMENT

STATION: 618+74

HORIZ.DATUM: GEOID:

GRID: NORTHING: EASTING:

RT 60	RT 61
RT 59	RT 62



RECORD .50
STA 618+59.20 } PLANS 2021B
 $\Delta = 00^{\circ}16'00''$ LT
FD SM.R.R.SPIKE
5/2/96, CL
SET P.K./WASHER
7/8/96

FD IPIN
7/2/24, JAM
FD IPIN
7/11/24, JAM

*HAVE TO SETUP TS TO GET SHOT ON POINT

US 20

*NOT DRAWN
CORRECT, JUST
SHOWING LOCATION
OF IPIN

FD "+" TOP
CONC BASE
GAS STATION

SET
SHI

60.45'

59.39'

FD
SHI

76.82'

59.01'

PEMBERVILLE RD

*SEE GOOGLE MAPS
FOR NEW LAYOUT

NOTE: USED TS W/ CP1 @ STA 822+00
AND CP2 @ STA 819+00. STA MARKS IN
CONCRETE.

O.D.O.T. DISTRICT 2 SURVEY OFFICE (USE ONLY)

PERSONNEL

REFERENCE NO. 44

SHEET 3 OF 12

NOTES LOEHRKE

DATE 5/2/96

ROUTE US 20

H.C. ROUSOS

WEATHER FAIR

COUNTY WOOD

R.C. CANTERBURY

TEMP. 52°

TOWNSHIP TROY

SECTION RT 61

DWG BY NIESE PID

T 6 N R 12 E

TYPE MONUMENT SM.R.R.SPIKE

ON SURFACE - ~~BELOW~~ ON

OFFSET CL PAVEMENT 13.1' LT : RT

1.6' LT OF LT EDGE PAVEMENT

STATION: 630+13

HORIZ.DATUM: GEOID:

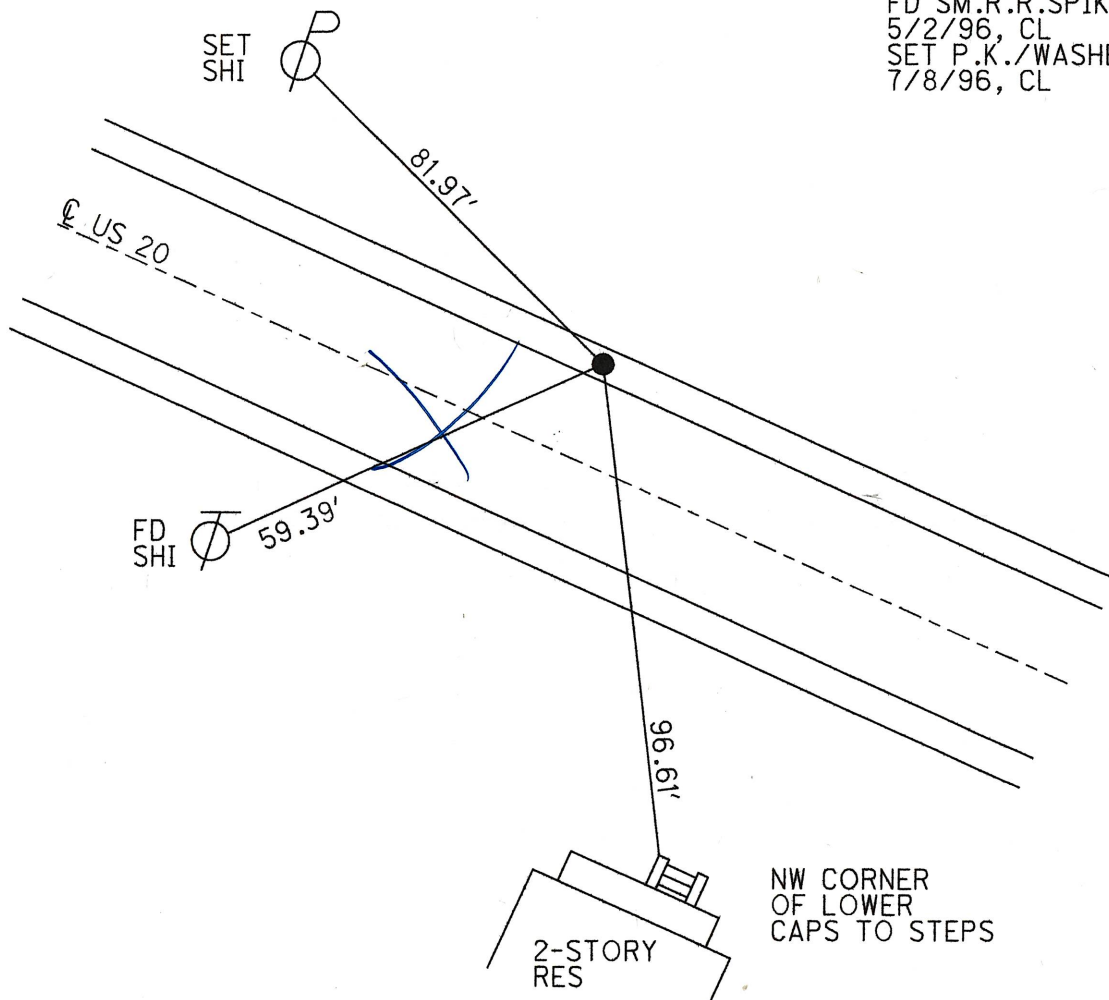
GRID: NORTHING: EASTING:

RT 60	RT 61
RT 59	RT 62



D.N.F 7/2/24, JAM

RECORD: P.O.T.
STA 630+26.53
FD SM.R.R.SPIKE
5/2/96, CL
SET P.K./WASHER
7/8/96, CL



O.D.O.T. DISTRICT 2 SURVEY OFFICE (USE ONLY)

PERSONNEL

REFERENCE NO. 45

SHEET 4 OF 12

NOTES LOEHRKE

DATE 5/2/96

ROUTE US 20

H.C. ROUSOS

WEATHER FAIR

COUNTY WOOD

R.C. CANTERBURY

TEMP. 50°

TOWNSHIP TROY

SECTION RT 64

DWG BY NIESE

PID

T 6 N R 12 E

TYPE MONUMENT SM.R.R.SPIKE

ON SURFACE - ~~BELOW~~ ON

OFFSET CL PAVEMENT 12.7' LT : RT

1.2' LT OF LT EDGE PAVEMENT

STATION: 643+18

1305 to REF44

HORZ.DATUM:

GEOID:

GRID: NORTHING:

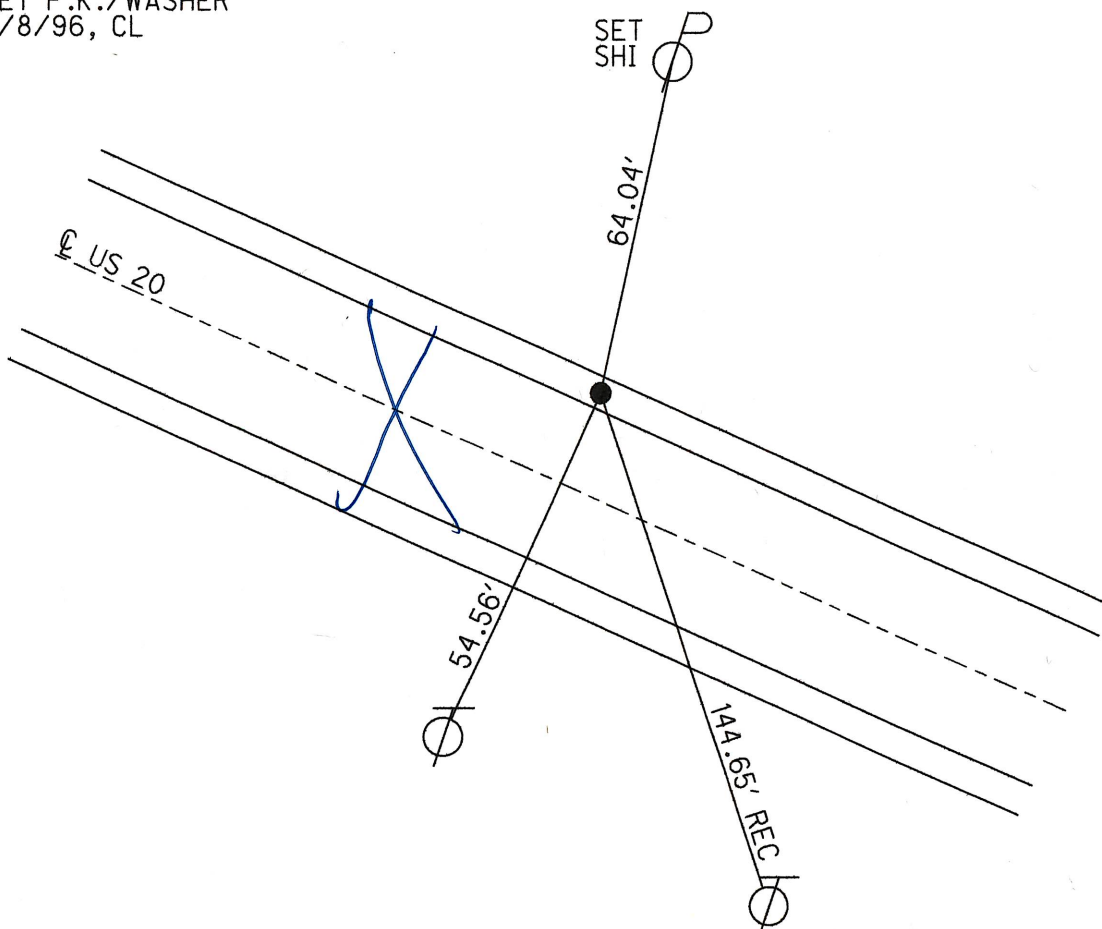
EASTING:

64	RT 65
RT 63	RT 66



D.N.F 7/2/24 JAM

RECORD: P.O.T.
STA 642+94.10
FD SM.R.R.SPIKE
5/2/96, CL
SET P.K./WASHER
7/8/96, CL



O.D.O.T. DISTRICT 2 SURVEY OFFICE (USE ONLY)

PERSONNEL

REFERENCE NO. 46

SHEET 5 OF 12

NOTES LOEHRKE

DATE 5/2/96

ROUTE US 20

H.C. ROUSOS

WEATHER FAIR

COUNTY WOOD

R.C. CANTERBURY

TEMP. 50°

TOWNSHIP TROY

SECTION RT 65

DWG BY NIESE

PID

T 6 N R 12 E

TYPE MONUMENT SM.R.R.SPIKE

ON SURFACE - ~~BELOW~~ ON

OFFSET CL PAVEMENT 13.1' LT : ~~RT~~

1.3' LT OF LT EDGE PAVEMENT

STATION: 655+56 1238 to REF45

HORIZ.DATUM:

GEOID:

GRID: NORTHING:

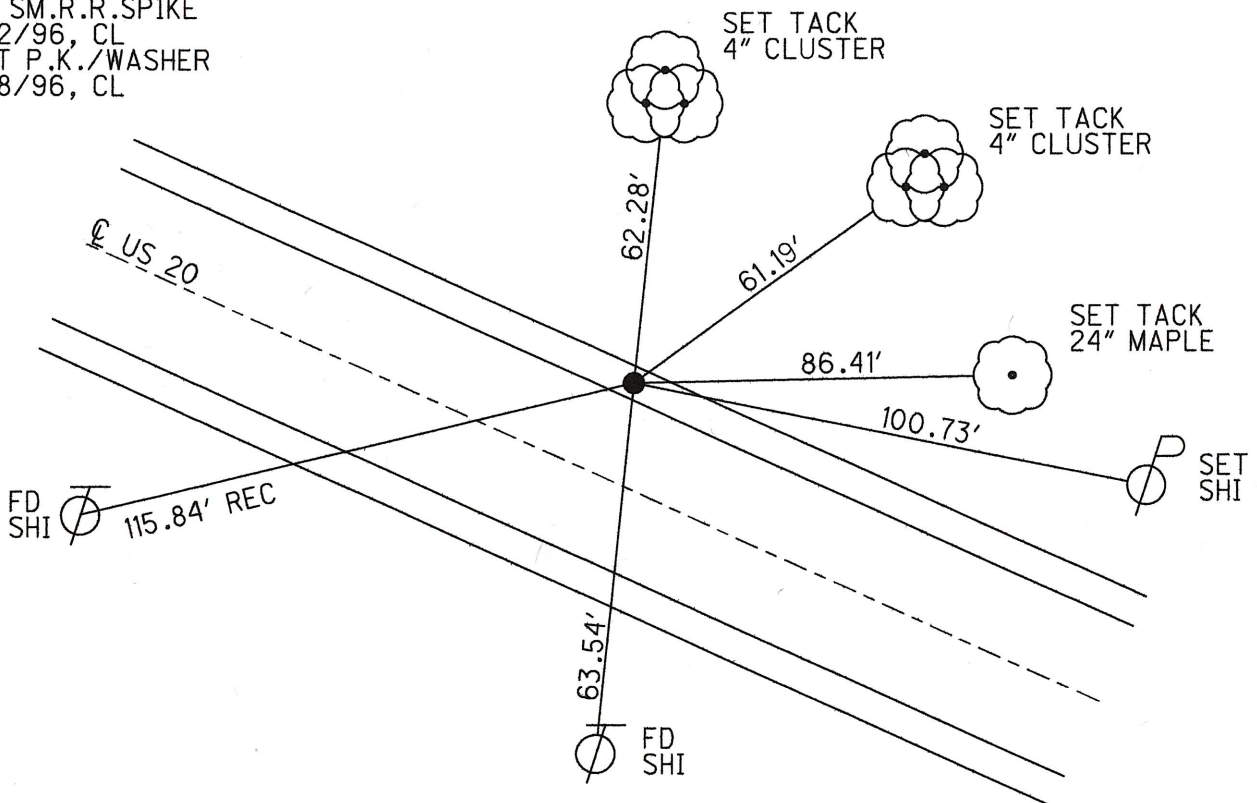
EASTING:

64	RT 65
RT 63	RT 66



D.N.F 7/2/24, JAM

RECORD: P.O.T.
STA 655+35.95
FD SM.R.R.SPIKE
5/2/96, CL
SET P.K./WASHER
7/8/96, CL



O.D.O.T. DISTRICT 2 SURVEY OFFICE (USE ONLY)

PERSONNEL

REFERENCE NO. 47

SHEET 6 OF 12

NOTES ~~LOEHRKE~~ MILLER DATE 5/2/96 7/2/24

H.C. ROUSOS MILLER WEATHER FAIR SUNNY

R.C. CANTERBURY BARTLE TEMP. 50° 67°

BLUBAUGH

DWG BY NIESE PID 101291

ROUTE US 20

COUNTY WOOD

TOWNSHIP TROY

SECTION RT 68

T 6 N R 12 E

TYPE MONUMENT SM.R.R.SPIKE MONBOX

ON SURFACE - BELOW ON ✓

OFFSET Q PAVEMENT 13.2' 4 LT : RT

2.3' LT OF LT EDGE PAVEMENT

STATION: 679+26 2376 to REF46

HORZ.DATUM: OHIO LDP (WOOD) GEOID: 18

GRID: NORTHING: — EASTING: —

RT 68	RT 69
RT 67	RT 70



RECORD: 679+05.17
 STA 679+03.80
 $\Delta = 00^{\circ}21'10''$ RT
 FD SM.R.R.SPIKE
 5/2/96, CL
 SET P.K./WASHER
 7/8/96
 FD MONBOX w/ 3" CAP
 7/2/24, JAM

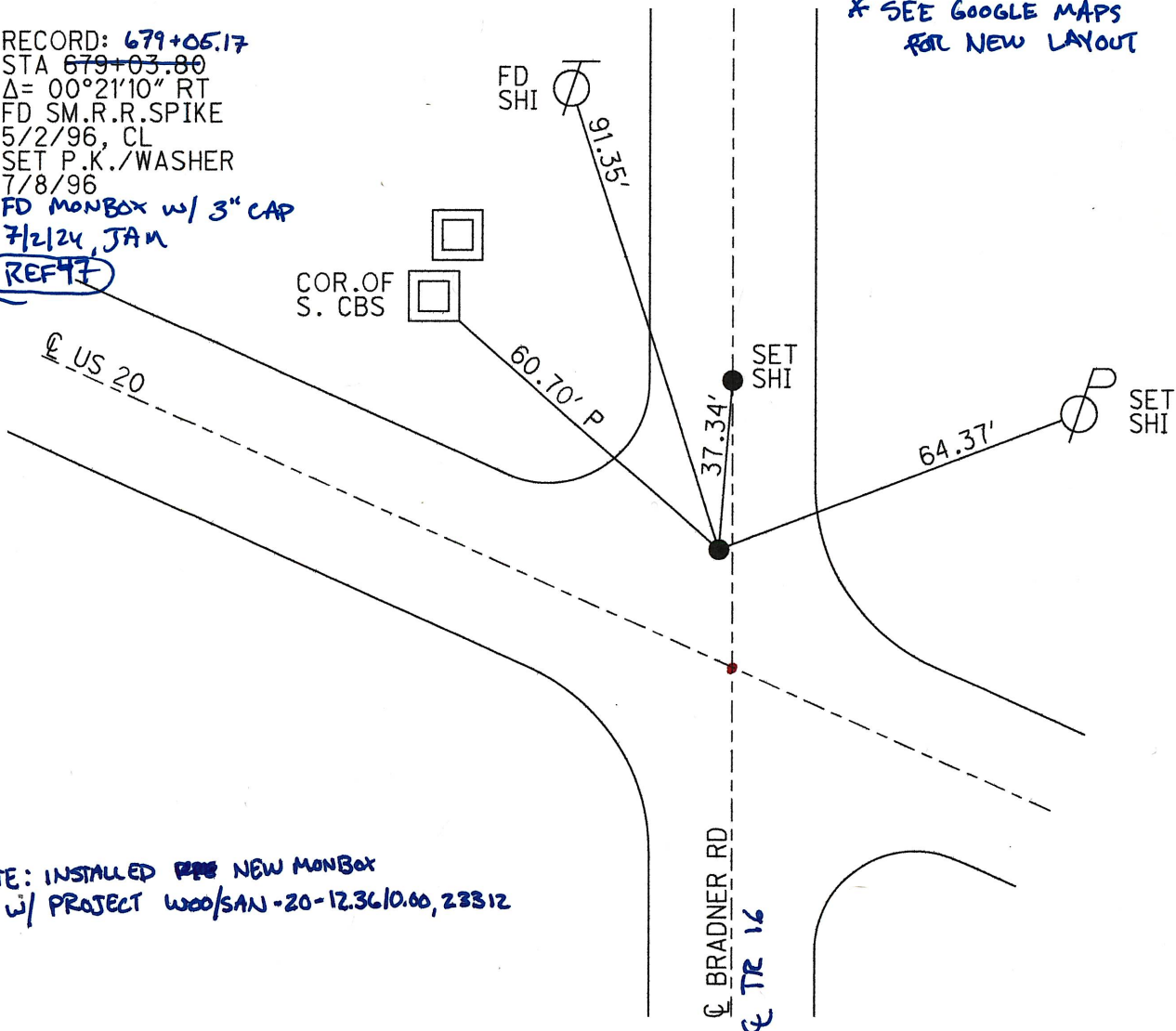
REF47

COR. OF
S. CBS

FD
SHI

* SEE GOOGLE MAPS
FOR NEW LAYOUT

NOTE: INSTALLED ~~REF~~ NEW MONBOX
 w/ PROJECT WOOD/SAN-20-12.36/0.00, 23312



O.D.O.T. DISTRICT 2 SURVEY OFFICE (USE ONLY)

PERSONNEL

REFERENCE NO. 48

SHEET 7 OF 12

NOTES LOEHRKE

DATE 5/2/96

ROUTE US 20

H.C. ROUSOS

WEATHER FAIR

COUNTY WOOD

R.C. CANTERBURY

TEMP. 50°

TOWNSHIP TROY

SECTION RT 72

DWG BY NIESE PID

T 6 N R 12 E

TYPE MONUMENT SM.R.R.SPIKE

ON SURFACE - ~~BELOW~~ ON

OFFSET CL PAVEMENT 13.0' LT : ~~RT~~

1.6' LT OF LT EDGE PAVEMENT

STATION: 694+21 1495 to REF47

HORIZ.DATUM: GEOID:

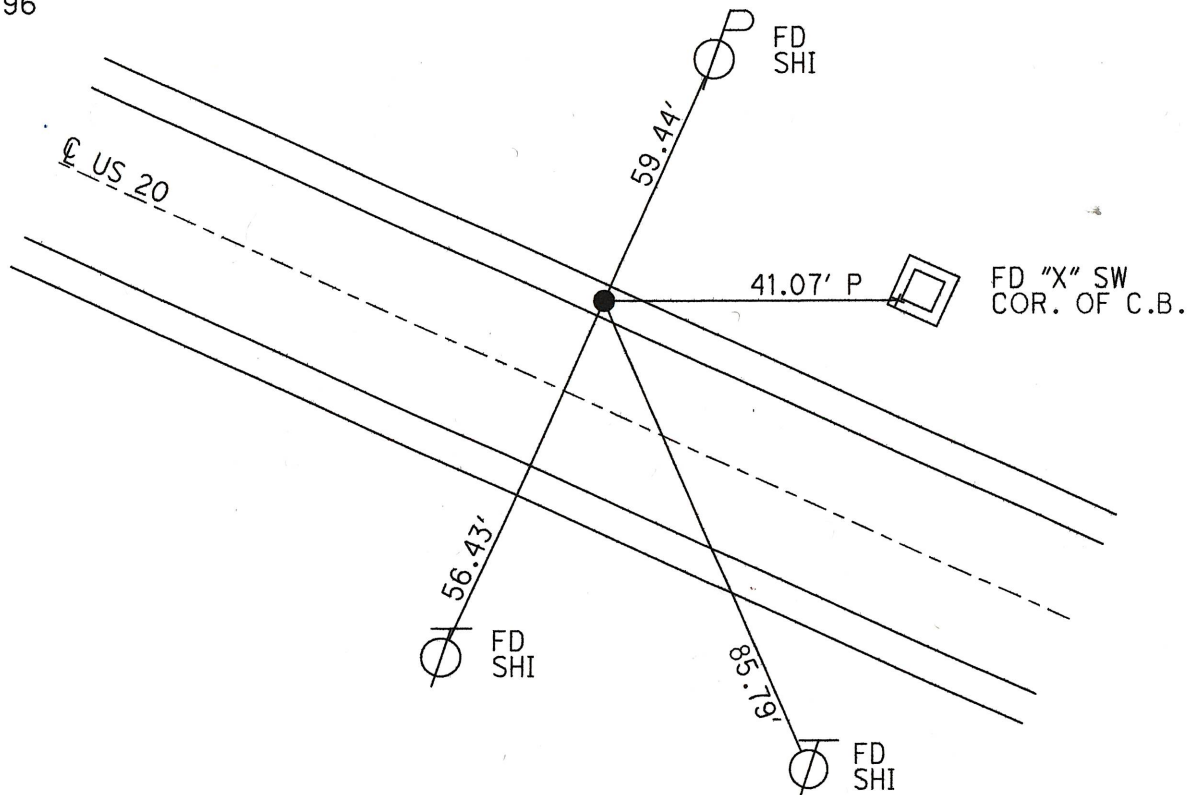
GRID: NORTHING: EASTING:

RT 69	RT 72
RT 70	71



DNF 7/2/24, JAM

RECORD: P.O.T.
STA 693+96.93
FD SM.R.R.SPIKE
5/2/96, CL
SET P.K./WASHER
7/8/96



O.D.O.T. DISTRICT 2 SURVEY OFFICE (USE ONLY)

PERSONNEL

REFERENCE NO. 49

SHEET 8 OF 12

NOTES LOEHRKE

DATE 5/2/96

ROUTE US 20

H.C. ROUSOS

WEATHER FAIR

COUNTY WOOD

R.C. CANTERBURY

TEMP. 50°

TOWNSHIP TROY

SECTION RT 73

DWG BY NIESE

PID

T 6 N R 12 E

TYPE MONUMENT SM.SPIKE

ON SURFACE - ~~BELOW~~ ON

OFFSET CL PAVEMENT 13.0' LT : ~~RT~~

1.6' TO LT EDGE PAVEMENT

STATION: 714+45 2024' to REF 48

HORZ.DATUM: GEOID:

GRID: NORTHING: EASTING:

RT 72	RT 73
71	74



DNF 7/2/24, JAm

RECORD:

STA 714+18.92

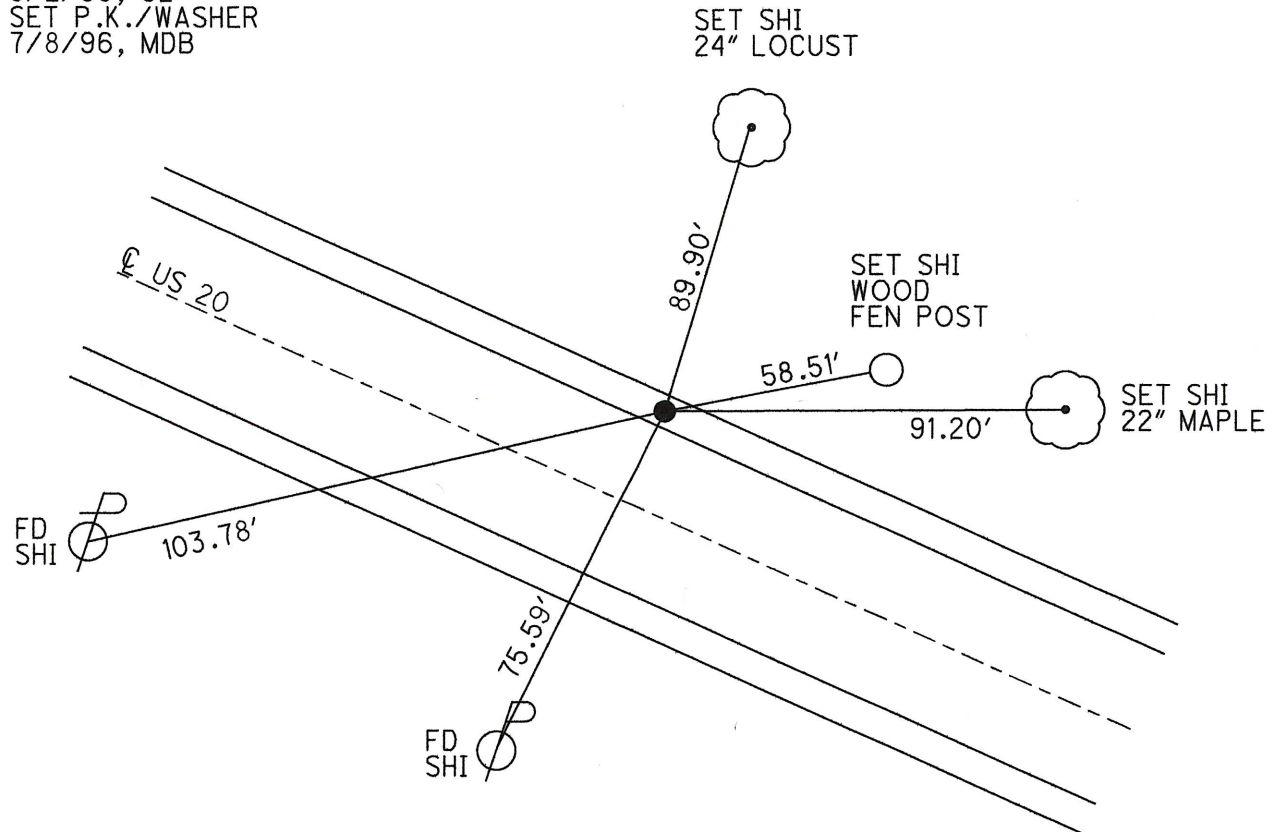
STA 713+94.78

FD SM.SPIKE

5/2/96, CL

SET P.K./WASHER

7/8/96, MDB



O.D.O.T. DISTRICT 2 SURVEY OFFICE (USE ONLY)

PERSONNEL

REFERENCE NO. 49 A

SHEET 9 OF 12

NOTES LOEHRKE

DATE 5/2/96

ROUTE US 20

H.C. ROUSOS

WEATHER FAIR

COUNTY WOOD

R.C. CANTERBURY

TEMP. 50°

TOWNSHIP TROY

SECTION RT 73

DWG BY NIESE

PID _____

T 6 N R 12 E

TYPE MONUMENT NAIL/SHINER

ON SURFACE - ~~BELOW~~ ON

OFFSET Q PAVEMENT 13.3' LT : RT

2.2' TO LT EDGE PAVEMENT

STATION: 721+49 704' to REF41

HORZ.DATUM: _____

GEOID: _____

GRID: NORTHING: _____

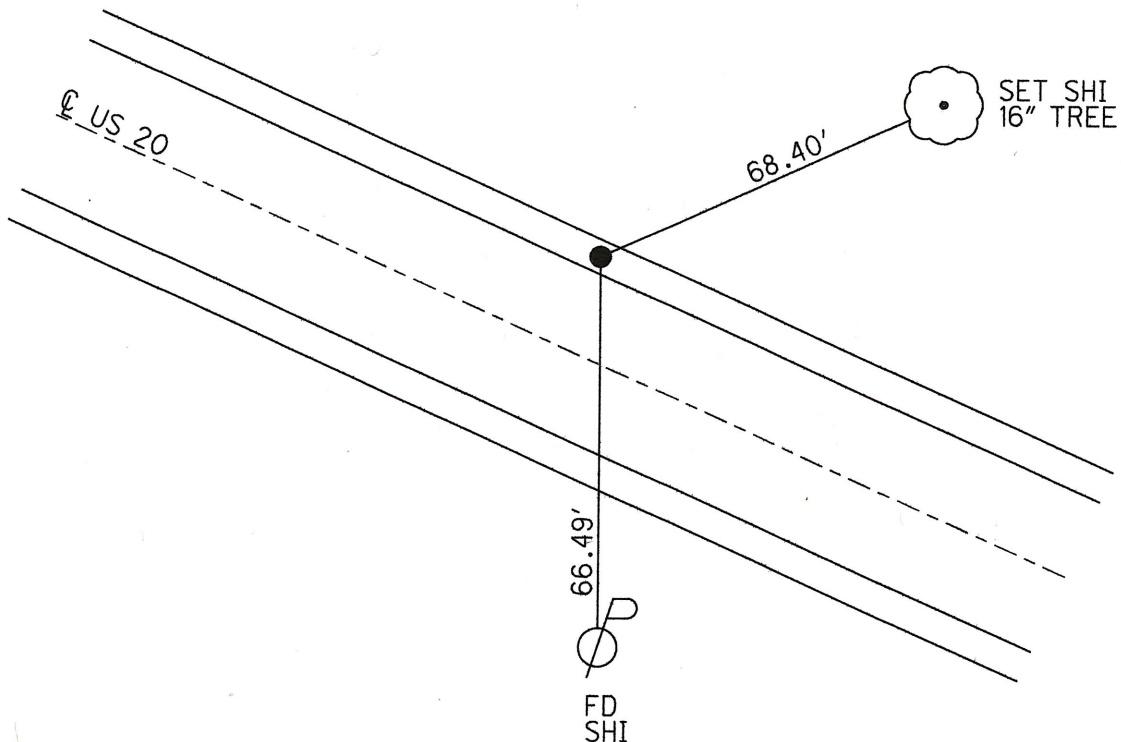
EASTING: _____

RT 72	RT 73
71	74



DNF 7/2/24, JAM

RECORD:
STA 721+00
FD NAIL/SHINER
5/2/96, CL
SET P.K./WASHER
7/8/96, CL



O.D.O.T. DISTRICT 2 SURVEY OFFICE (USE ONLY)

PERSONNEL

REFERENCE NO. 50 A

SHEET 11 OF 12

NOTES LOEHRKE

DATE 5/2/96

ROUTE US 20

H.C. ROUSOS

WEATHER FAIR

COUNTY WOOD

R.C. CANTERBURY

TEMP. 60°

TOWNSHIP TROY

SECTION 76

DWG BY NIESE

PID

T 6 N R 12 E

TYPE MONUMENT SM.R.R.SPIKE

ON SURFACE - ~~BELOW~~ ON

OFFSET CL PAVEMENT 13.0' LT : RT

1.7' TO LT EDGE PAVEMENT

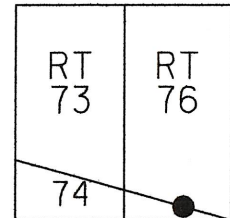
STATION: 727+27.43 ~~128~~ 289' to REF 50

HORZ.DATUM:

GEOID:

GRID: NORTHING:

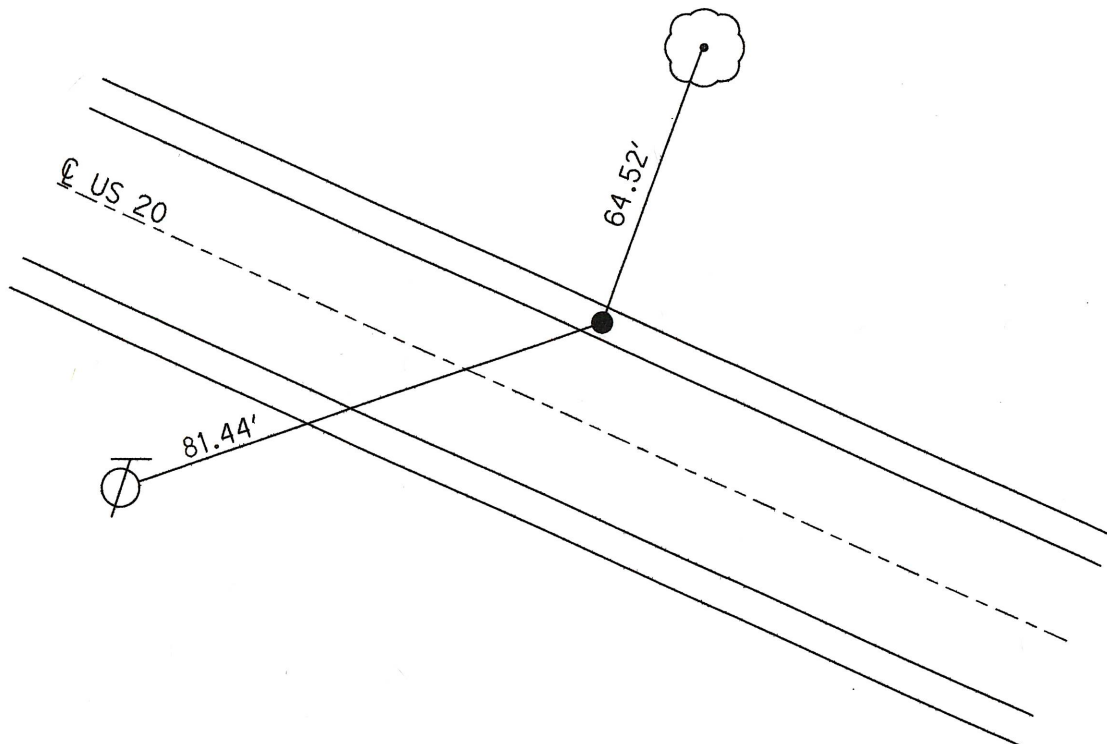
EASTING:



DNF 7/2/24, JAM

RECORD:
STA 727+17.26
FD SM.R.R.SPIKE
5/2/96, CL
SET P.K./WASHER
7/8/96, CL

SET SHI
12" HAWTHORNE



O.D.O.T. DISTRICT 2 SURVEY OFFICE (USE ONLY)

PERSONNEL

REFERENCE NO. 50

SHEET 10 OF 12

NOTES LOEHRKE

DATE 5/2/96

ROUTE US 20

H.C. ROUSOS

WEATHER FAIR

COUNTY WOOD

R.C. CANTERBURY

TEMP. 50°

TOWNSHIP TROY

SECTION RT 76

DWG BY NIESE PID

T 6 N R 12 E

TYPE MONUMENT P.K. NAIL

ON SURFACE - ~~BELOW~~ ON

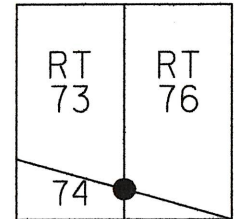
OFFSET CL PAVEMENT 13.2' LT : ~~RT~~

1.5' TO LT EDGE PAVEMENT

STATION: 724+38 289 + REC 49A

HORZ. DATUM: GEOID:

GRID: NORTHING: EASTING:



DNF 7/2/24, JAM

RECORD:

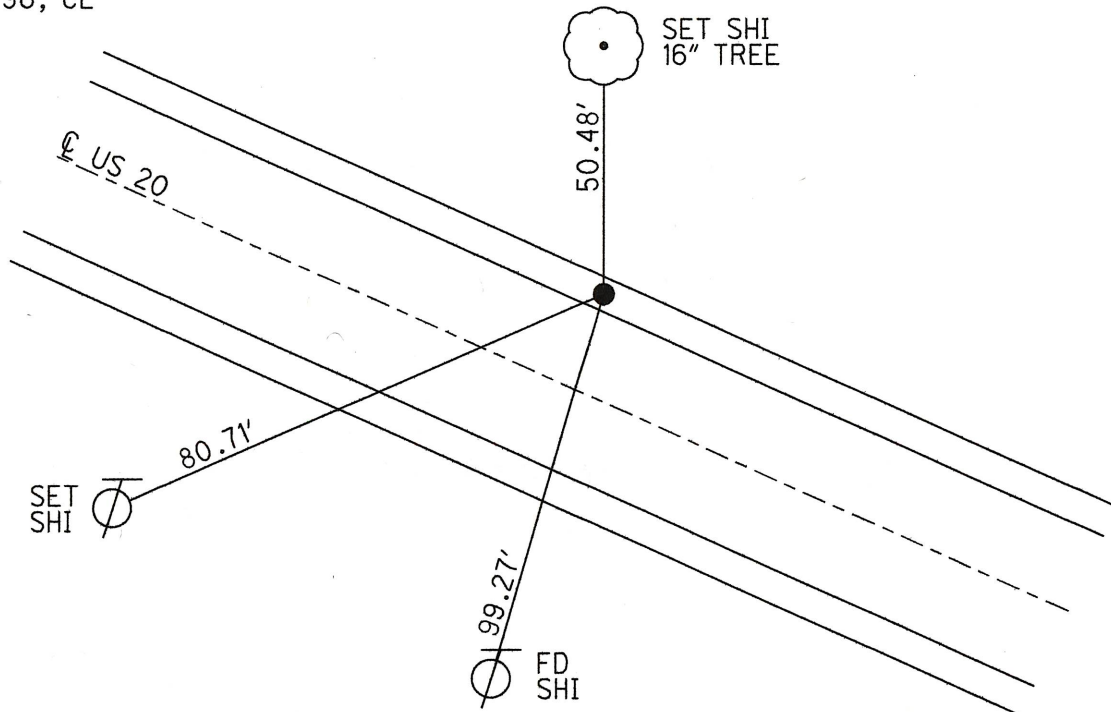
STA 727+17.26

FD P.K. NAIL

5/2/96, CL

SET P.K./WASHER

7/8/96, CL



START STA. FOR SAN-20 = 0+00.00

REF 43

O.D.O.T. DISTRICT 2 SURVEY OFFICE (USE ONLY)

PERSONNEL

REFERENCE NO. 51

SHEET 12 OF 12

NOTES ~~LOEHRKE~~ JAM DATE 5/2/96 7/2/24

H.C. ROUSOS JAM WEATHER FAIR SUNNY

R.C. CANTERBURY SAB TEMP. 50° 70°
CCB

ROUTE US 20

COUNTY WOOD

TOWNSHIP TROY

SECTION RT 76

DWG BY NIESE PID

T 6 N R 12 E

TYPE MONUMENT ~~SM.R.R.SPIKE~~ MON BOX

ON SURFACE - ~~BELOW~~ ON

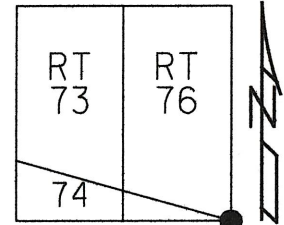
OFFSET $\frac{1}{2}$ PAVEMENT 12.7' LT: RT

2.0' TO LT EDGE PAVEMENT

STATION: ~~739+62~~ 739+75.10

HORZ.DATUM: GEOID:

GRID: NORTHING: 0410 LDP (WOOD) EASTING: 18



RECORD 739+75.10

STA 739+72.80

$\Delta = 00^{\circ}00'00''$

FD SM.R.R.SPIKE

5/2/96, CL

SET P.K./WASHER

7/8/96, CL

FD MONBOX w/ 3" CAP

7/2/24, JAM

SANREF1

US 20

FD
SHI

100.30'

CB 2

58.89' SET
SHI

56.08' FD
SHI

FD
SHI

65.51'

PENBERVILLE RD

US 23

*SEE ~~THE~~ GOOGLE
MAPS FOR NEW
LAYOUT

NOTE: INSTALLED NEW MONBOX

w/ PROJECT W00/SAN-20-1236/000,23312

O.D.O.T. DISTRICT 2 SURVEY OFFICE (USE ONLY)

PERSONNEL

REFERENCE NO. 1

SHEET 1 OF 20

NOTES LOEHRKE

DATE 5/2/96

ROUTE US 20

H.C. ROUSOS

WEATHER FAIR, WINDY

COUNTY SANDUSKY

R.C. CANTERBURY

TEMP. 50°F

TOWNSHIP WOODVILLE

SECTION 19

DWG BY AUBLE

PID

T 6 N R 13 E

TYPE MONUMENT SM.R.R.SPIKE

ON SURFACE - ~~BELOW~~ ON

OFFSET ℄ PAVEMENT 12.7' LT : ~~RT~~

- TO - EDGE PAVEMENT

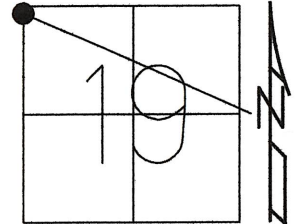
STATION: 0+00 / 739+75.16 1247' to REFSDA

HORZ.DATUM: -

GEOID: -

GRID: NORTHING: -

EASTING: -



RECORD:
FD MINE SPIKE
9/23/85, RIPPLE

SEE WOOD REFSDA

FD
SHI



CR 2

100.30'

58.89'

SET
SHI

56.08'

FD
SHI

65.51'

FD
SHI



WOOD CO.

℄ US 23

SANDUSKY CO.

℄ US 20

O.D.O.T. DISTRICT 2 SURVEY OFFICE (USE ONLY)

PERSONNEL

REFERENCE NO. 3

SHEET 2 OF 20

NOTES BARNHISEL

DATE 4/1/04

ROUTE US 20

H.C. HUSS

WEATHER CLOUDY

COUNTY SANDUSKY

R.C. BARNHISEL
HOOKE, HUSS

TEMP. 37 ° F

TOWNSHIP WOODVILLE

SECTION 19

DWG BY AUBLE

PID _____

T 6 N R 13 E

TYPE MONUMENT P.K./WASHER

ON SURFACE - ~~BELOW~~ ON _____

OFFSET Q PAVEMENT 13.6' LT : ~~RT~~

1.4' TO LT EDGE PAVEMENT

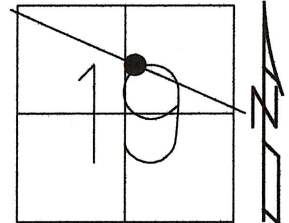
STATION: 28+76

HORIZ.DATUM: _____

GEOID: _____

GRID: NORTHING: _____

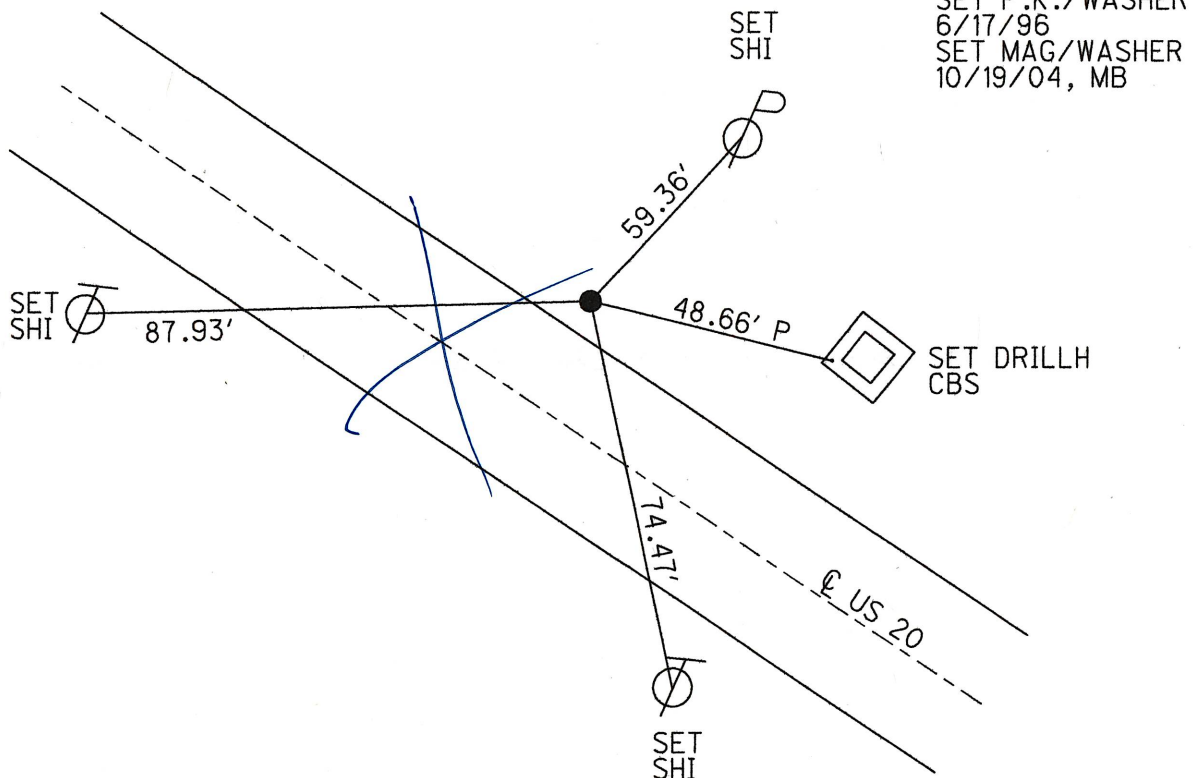
EASTING: _____



DNF

7/2/24, JAM

DOES NOT LOOK LIKE THIS



RECORD:

STA. 28+73.71

FD IRON BOLT

8/25/72

SET BOAT SPIKE

10/15/74

FD P.K./WASHER

ATOP BOAT SPIKE

9/23/85, RIPPLE

SET P.K./WASHER

6/17/96

SET MAG/WASHER

10/19/04, MB

O.D.O.T. DISTRICT 2 SURVEY OFFICE (USE ONLY)

PERSONNEL

REFERENCE NO. 3 A

SHEET 3 OF 20

NOTES BARNHISEL

DATE 7/26/04

ROUTE US 20

H.C. CANTERBURY

WEATHER CLOUDY

COUNTY SANDUSKY

R.C. ADKINS

TEMP. 65°F

TOWNSHIP WOODVILLE

HUSS

SECTION 19

DWG BY AUBLE

PID _____

T 6 N R 13 E

TYPE MONUMENT P.K./WASHER

ON SURFACE - ~~BELOW~~ ON

OFFSET Q PAVEMENT 13' LT : RT

1.4' TO LT EDGE PAVEMENT

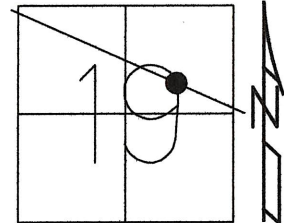
STATION: 42+46 1376 to 2253

HORIZ.DATUM: _____

GEOID: _____

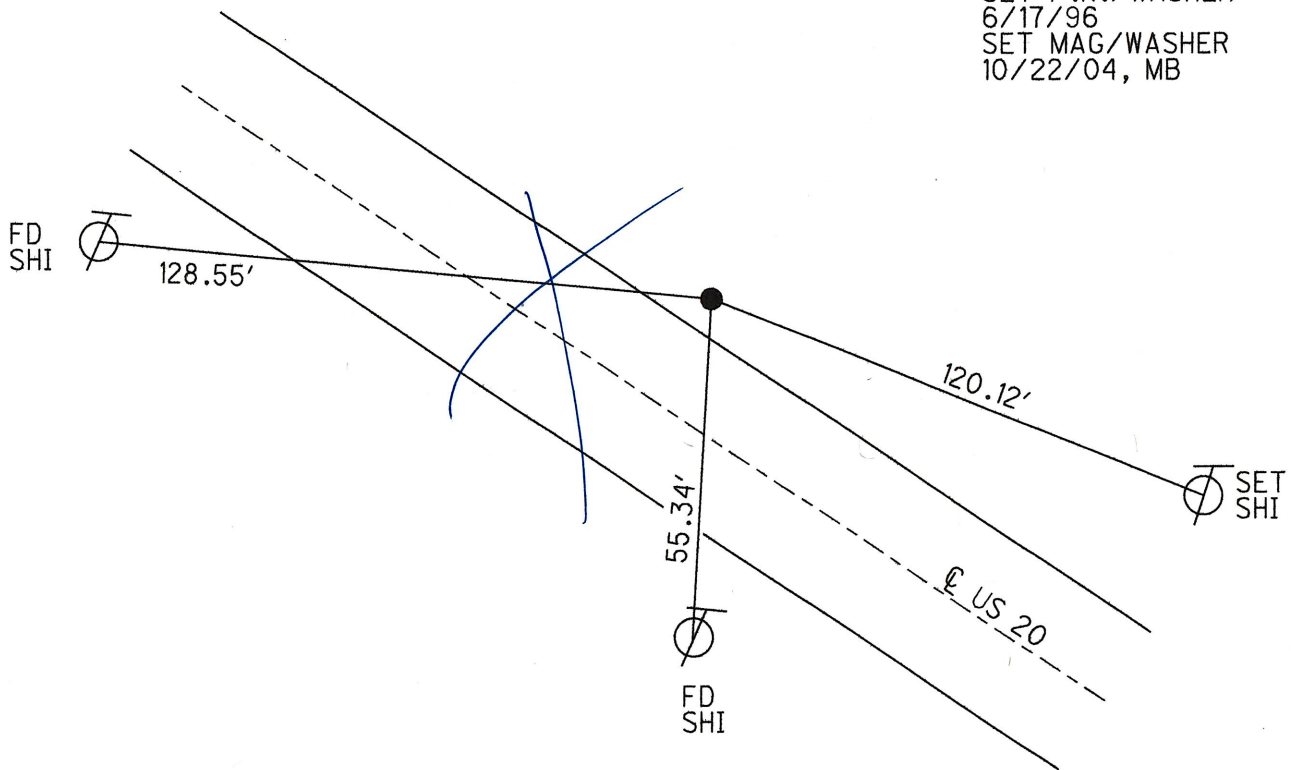
GRID: NORTHING: _____

EASTING: _____



DNF 7/2/24, JAM

RECORD:
STA. 42+42.30
FD IRON BOLT
8/25/72
FD P.K./WASHER
ATOP BOAT SPIKE
9/23/85, RIPPLE
SET P.K./WASHER
6/17/96
SET MAG/WASHER
10/22/04, MB



O.D.O.T. DISTRICT 2 SURVEY OFFICE (USE ONLY)

PERSONNEL

REFERENCE NO. 3 B

SHEET 4 OF 20

NOTES BARNHISEL

DATE 4/1/04

ROUTE US 20

H.C. HUSS

WEATHER CLOUDY

COUNTY SANDUSKY

R.C. BARNHISEL

TEMP. 36°F

TOWNSHIP WOODVILLE

HOOKE, HUSS

SECTION 19

DWG BY AUBLE

PID _____

T 6 N R 13 E

TYPE MONUMENT P.K./WASHER

ON SURFACE - ~~BELOW~~ ON

OFFSET 1.4' TO LT EDGE PAVEMENT

STATION: 48+88

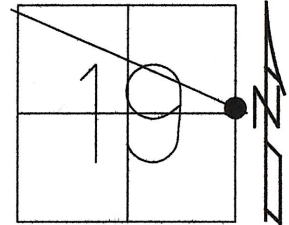
642 to REF 3A

HORIZ.DATUM: -

GEOID: -

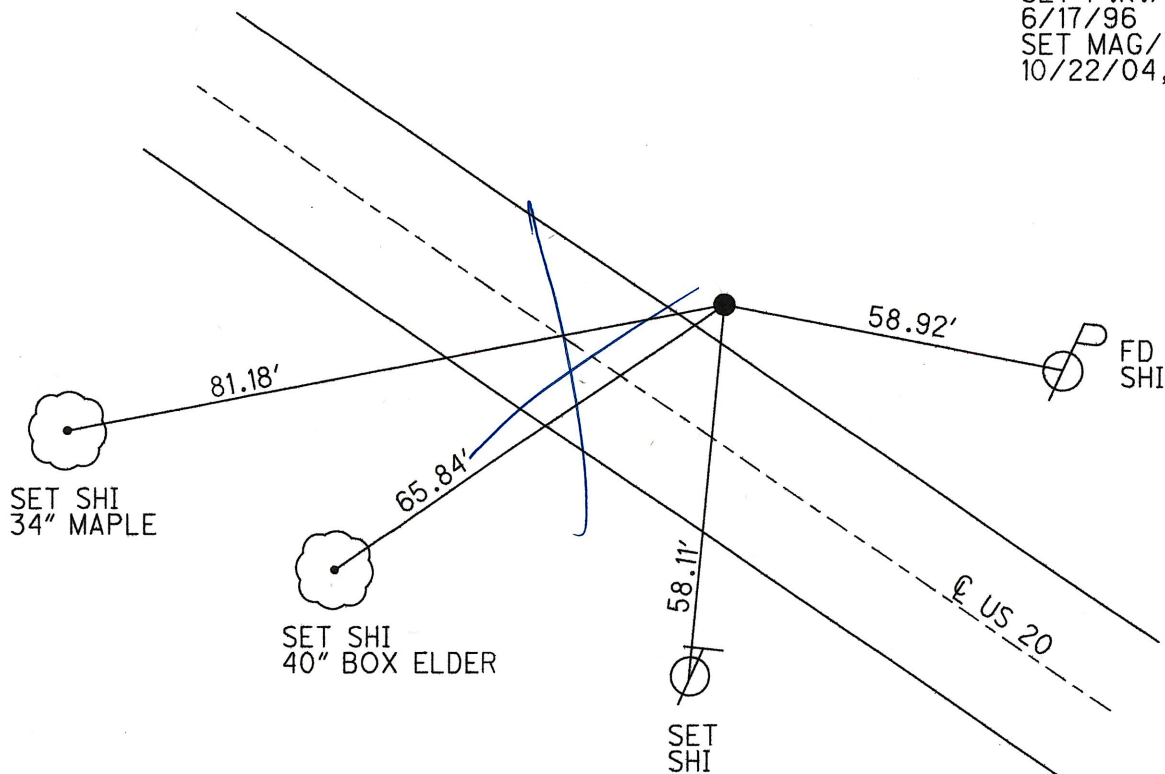
GRID: NORTHING: -

EASTING: -



DNF 7/2/24, JAM

RECORD:
STA. 48+84.5
FD P.K. NAIL
8/25/72
FD P.K./WASHER
ATOP BOAT SPIKE
9/23/85, RIPPLE
SET P.K./WASHER
6/17/96
SET MAG/WASHER
10/22/04, MB



O.D.O.T. DISTRICT 2 SURVEY OFFICE (USE ONLY)

PERSONNEL

REFERENCE NO. 3C

SHEET ____ OF ____

NOTES MILLER

DATE 7/2/24

ROUTE 20

H.C. MILLER

WEATHER SUNNY

COUNTY SAN

R.C. BARRE

TEMP. 65

TOWNSHIP WOODVILLE

BLUBAUGH

SECTION 20

DWG BY _____ PID 101291

T 6 N R 13 E

TYPE MONUMENT MONBOX

ON SURFACE - ~~BELOW~~ ON ☒

OFFSET $\frac{1}{2}$ PAVEMENT _____ ~~LT~~ : ~~RT~~

_____ TO _____ EDGE PAVEMENT

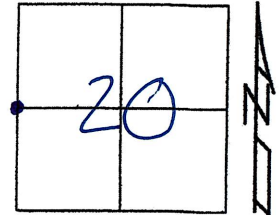
STATION: 56+36.21

HORZ. DATUM: OHIO LDP (WOOD)

GEOID: 18

GRID: NORTHING: _____

EASTING: _____



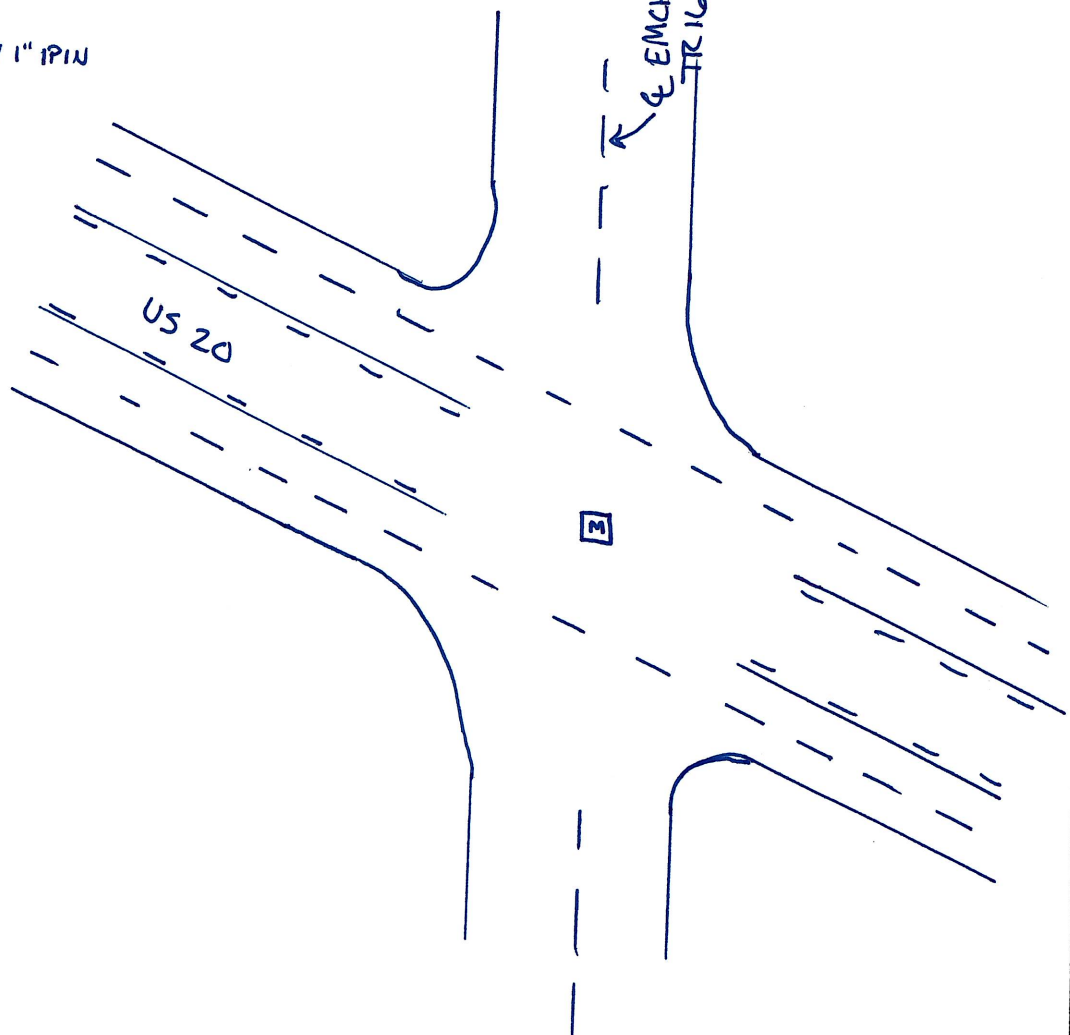
RECORD: P.I.

STA 56+36.21

FD MONBOX w/ 1" IPIN

SAN REF 3C

7/2/24, JAM



O.D.O.T. DISTRICT 2 SURVEY OFFICE (USE ONLY)

PERSONNEL

REFERENCE NO. 4

SHEET 5 OF 20

NOTES BARNHISEL

DATE 4/1/04

ROUTE US 20

H.C. HUSS

WEATHER CLOUDY

COUNTY SANDUSKY

R.C. BARNHISEL

TEMP. 36°F

TOWNSHIP WOODVILLE

HOOVER, HUSS

SECTION 20

DWG BY AUBLE

PID _____

T 6 N R 13 E

TYPE MONUMENT P.K./WASHER

ON SURFACE - ~~BELOW~~ ON

OFFSET Q PAVEMENT 13.1' LT : ~~RT~~

1.6' TO LT EDGE PAVEMENT

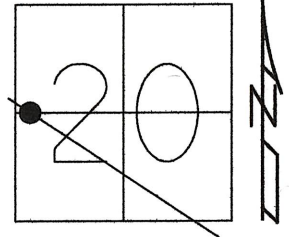
STATION: 68+74 1986 to REF38

HORIZ.DATUM: -

GEOID: -

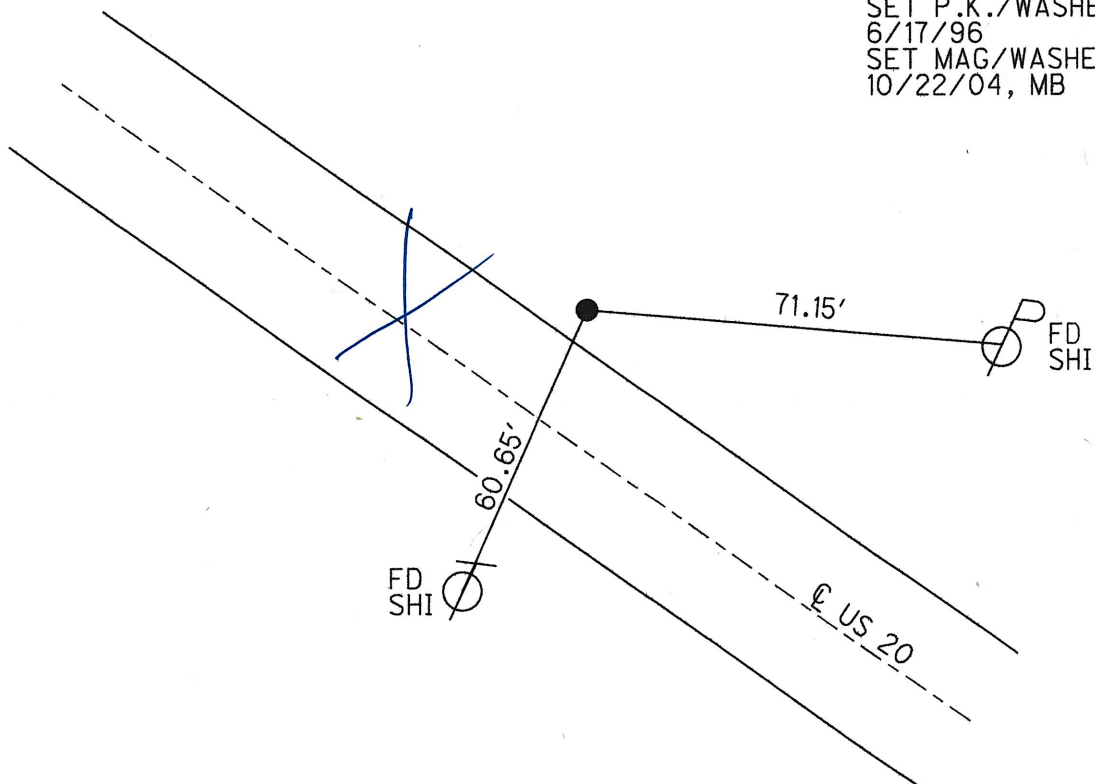
GRID: NORTHING: -

EASTING: -



DNF 7/2/24, JAM

RECORD:
STA. 68+66.99
FD TACKED HUB
8/25/72
FD P.K./WASHER
ATOP BOAT SPIKE
9/23/85, RIPPLE
SET P.K./WASHER
6/17/96
SET MAG/WASHER
10/22/04, MB



O.D.O.T. DISTRICT 2 SURVEY OFFICE (USE ONLY)

PERSONNEL

REFERENCE NO. 4 A

SHEET 6 OF 20

NOTES BARNHISEL

DATE 4/1/04

ROUTE US 20

H.C. HUSS

WEATHER CLOUDY

COUNTY SANDUSKY

R.C. HOOKE

TEMP. 36°F

TOWNSHIP WOODVILLE

SECTION 20

DWG BY AUBLE

PID

T 6 N R 13 E

TYPE MONUMENT P.K./WASHER

ON SURFACE - ~~BELOW~~ ON

OFFSET Q PAVEMENT 13.2' LT : RT

1.7' TO LT EDGE PAVEMENT

STATION: 78+29

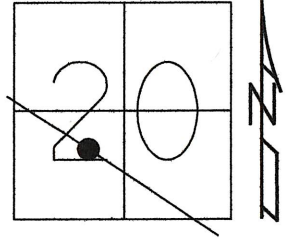
956 to REF4

HORZ.DATUM: -

GEOID: -

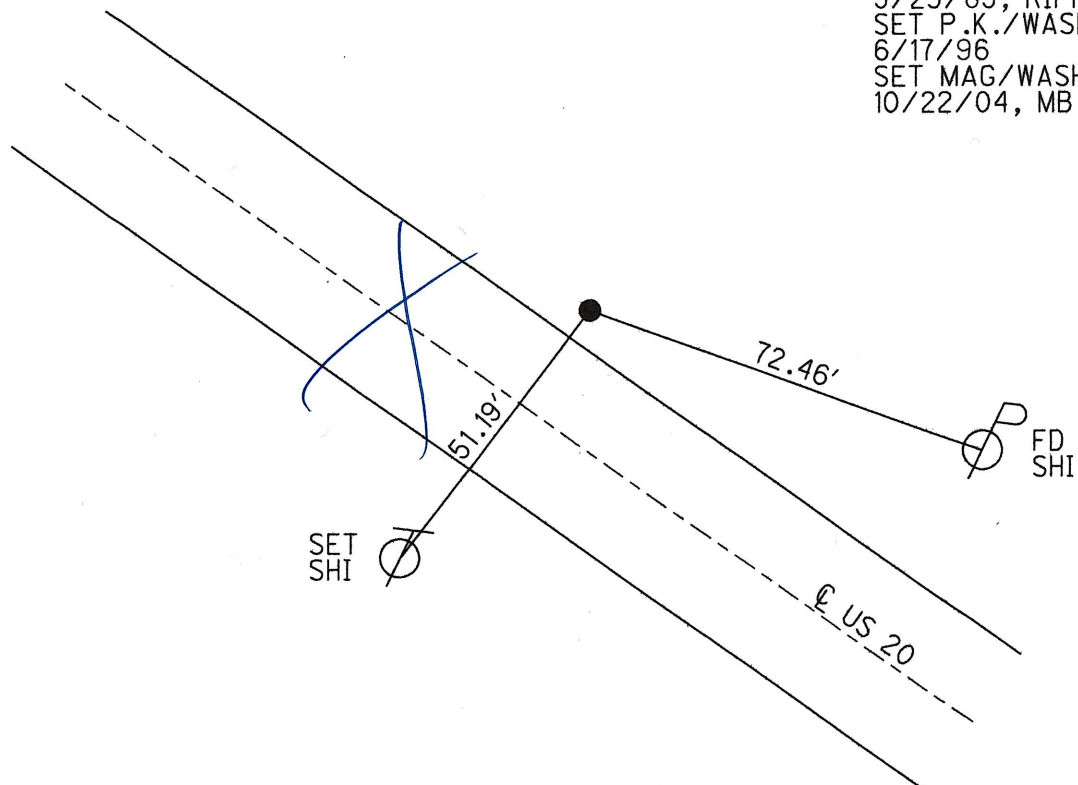
GRID: NORTHING: -

EASTING: -



DNF 7/2/24, JAM

RECORD:
STA. 78+21.61
SET P.K.NAIL
IN OLD HUB
8/25/72
FD P.K./WASHER
ATOP BOAT SPIKE
9/23/85, RIPPLE
SET P.K./WASHER
6/17/96
SET MAG/WASHER
10/22/04, MB



O.D.O.T. DISTRICT 2 SURVEY OFFICE (USE ONLY)

PERSONNEL

REFERENCE NO. 4 B

SHEET 7 OF 20

NOTES BARNHISEL

DATE 4/1/04

ROUTE US 20

H.C. HUSS

WEATHER CLOUDY

COUNTY SANDUSKY

R.C. HOOKE

TEMP. 36°F

TOWNSHIP WOODVILLE

SECTION 20

DWG BY AUBLE

PID _____

T 6 N R 13 E

TYPE MONUMENT P.K./WASHER

ON SURFACE - ~~BELOW~~ ON

OFFSET Q PAVEMENT 13.1' LT : ~~RT~~

1.2' TO LT EDGE PAVEMENT

STATION: 104+35

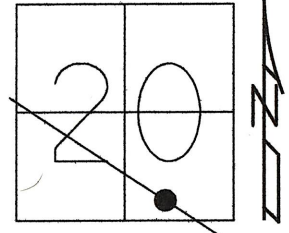
2606 to REFYA

HORZ.DATUM: -

GEOID: -

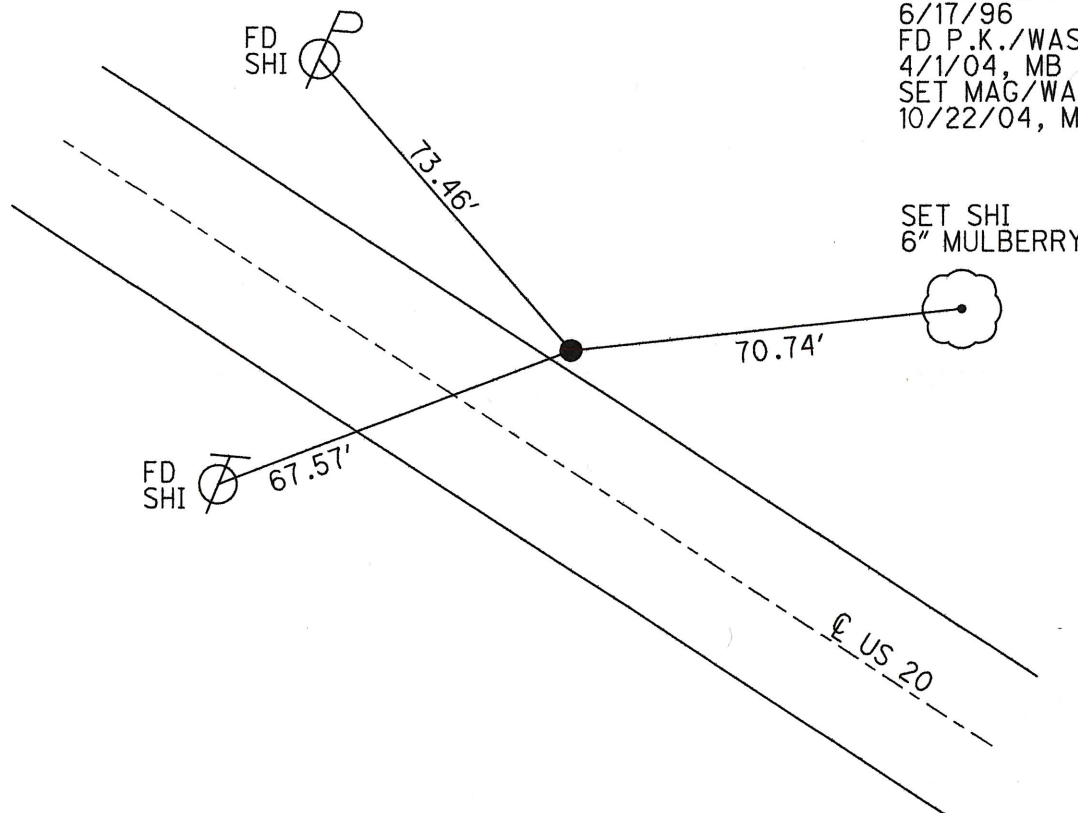
GRID: NORTHING: -

EASTING: -



DNF 7/2/24, JAM

RECORD:
STA.104+24.81
SET P.K.NAIL
IN OLD HUB
8/25/72
FD P.K./WASHER
ATOP BOAT SPIKE
9/23/85, RIPPLE
SET P.K./WASHER
6/17/96
FD P.K./WASHER
4/1/04, MB
SET MAG/WASHER
10/22/04, MB



O.D.O.T. DISTRICT 2 SURVEY OFFICE (USE ONLY)

PERSONNEL

REFERENCE NO. 5

SHEET 8 OF 20

NOTES ~~BARNHISEL~~ MILLER DATE ~~3/30/04~~ 7/2/24

H.C. ~~NUHFER~~ MILLER WEATHER ~~RAIN~~ SUNNY

R.C. ~~HUSS~~ BLUBAUGH TEMP. ~~50°F~~ 65°

~~HOOVER~~ BARREIRE

ROUTE US 20 ✓

COUNTY SANDUSKY ✓

TOWNSHIP WOODVILLE ✓

SECTION 28 ✓

DWG BY AUBLE PID 101291

T 6 N R 13 E

TYPE MONUMENT ~~P.K./WASHER~~ MONBOX

ON SURFACE - ~~BELOW~~ ON ✓

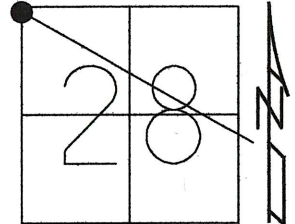
OFFSET Q PAVEMENT ~~12.3'~~ ET : RT

0.3' TO LT EDGE PAVEMENT

STATION: ~~118+22~~ 118+12.70 1387 to REF 4D

HORIZ.DATUM: - OHIO LDP (WOOD) GEOID: - 18

GRID: NORTHING: 476028.790 EASTING: 238826.145



NOT WITHIN PROJECT LIMITS

* SEE GOOGLE MAPS
FOR NEW LAYOUT

RECORD: P.I.
STA. ~~118+11.5~~ 118+12.70

FD R.R.SPIKE

8/28/72

STA 118+13.65

$\Delta = 0^\circ 45'$ LT

FD R.R.SPIKE

7/9/74

SET BOAT SPIKE

10/9/74

FD P.K./WASHER

ATOP BOAT SPIKE

9/23/85, RIPPLE

SET P.K./WASHER

6/17/96

SET MAG/WASHER

10/22/04, MB

FD MONBOX w/ 3" CAP

7/2/24, JAM

SANREF5

SET SHI
CUT OFF
POLE

FD
SHI

TR
CUT 28
DUTCH RD

FD LG
R.R.SPK.
4" DOWN

SET
SHI

NOTE: INSTALLED NEW MONBOX
w/ PROJECT WOO/SAN-20-12.36/0.00, 23312

NOTE: WOODVILLE CORP.LINE

O.D.O.T. DISTRICT 2 SURVEY OFFICE (USE ONLY)

PERSONNEL

REFERENCE NO. 5 A

SHEET 9 OF 20

NOTES BARNHISEL

DATE 3/30/04

ROUTE US 20

H.C. NUHFER

WEATHER RAIN

COUNTY SANDUSKY

R.C. HUSS

TEMP. 50°F

TOWNSHIP WOODVILLE

HOOVER

SECTION 28

DWG BY AUBLE

PID

T 6 N R 13 E

TYPE MONUMENT P.K./WASHER

ON SURFACE - ~~BELOW~~ ON

OFFSET Q PAVEMENT ON LT : RT

19.5' TO RT EDGE PAVEMENT

STATION: 133+92

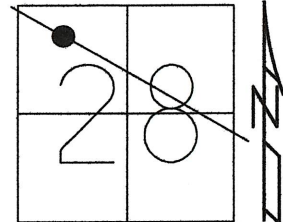
1570' TO REFS

HORIZ.DATUM: -

GEOID: -

GRID: NORTHING: -

EASTING: -



NOT WITHIN PROJECT LIMITS

RECORD: P.I.
STA 133+85.01
 $\Delta = 0^\circ 53'$ RT
FD R.R.SPIKE
7/9/74
SET P.K.NAIL
10/9/74
FD R.R.SPIKE
SET P.K./WASHER
4/25/91, MB
SET P.K./WASHER
6/17/96
SET MAG/WASHER
10/22/04, MB

